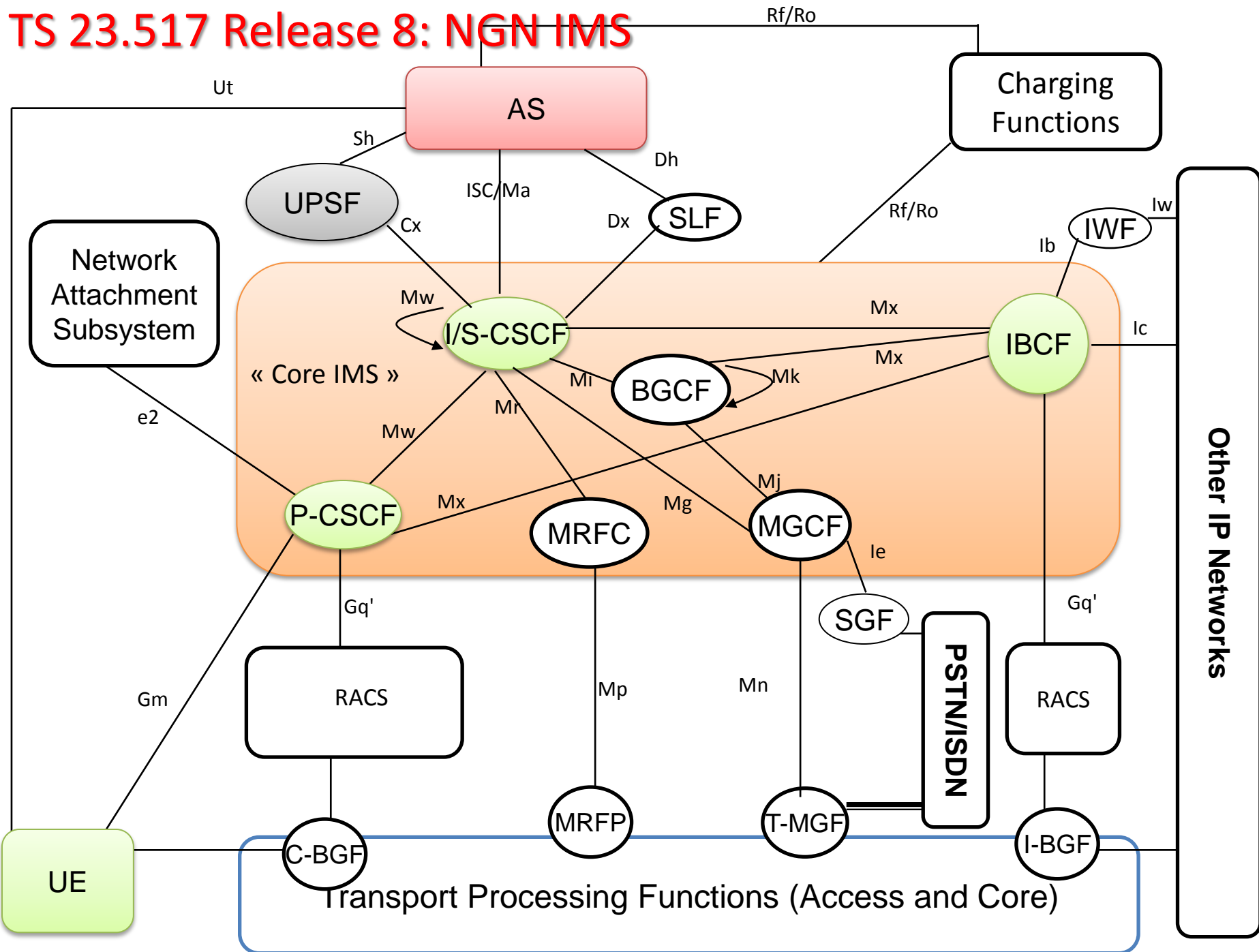
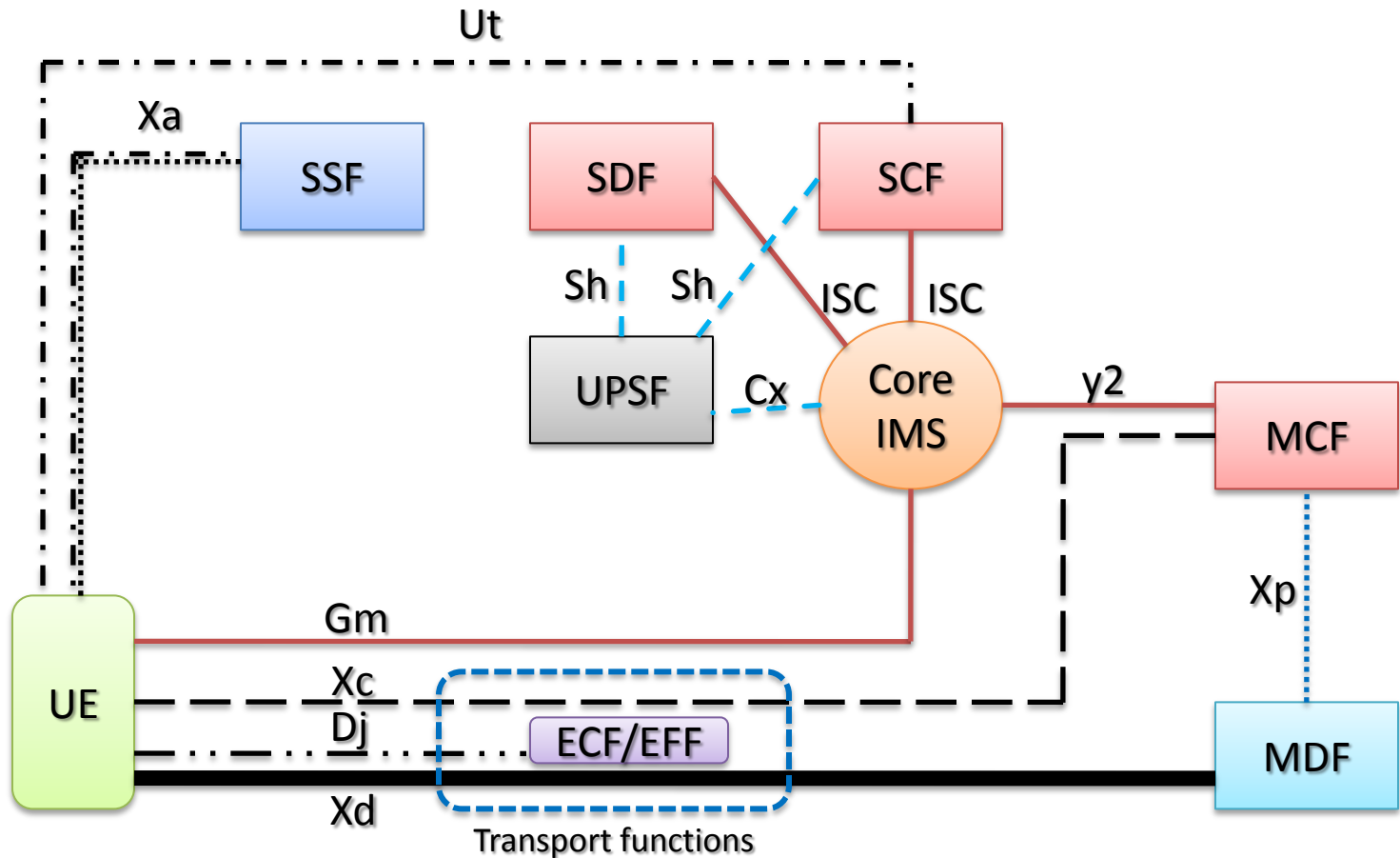


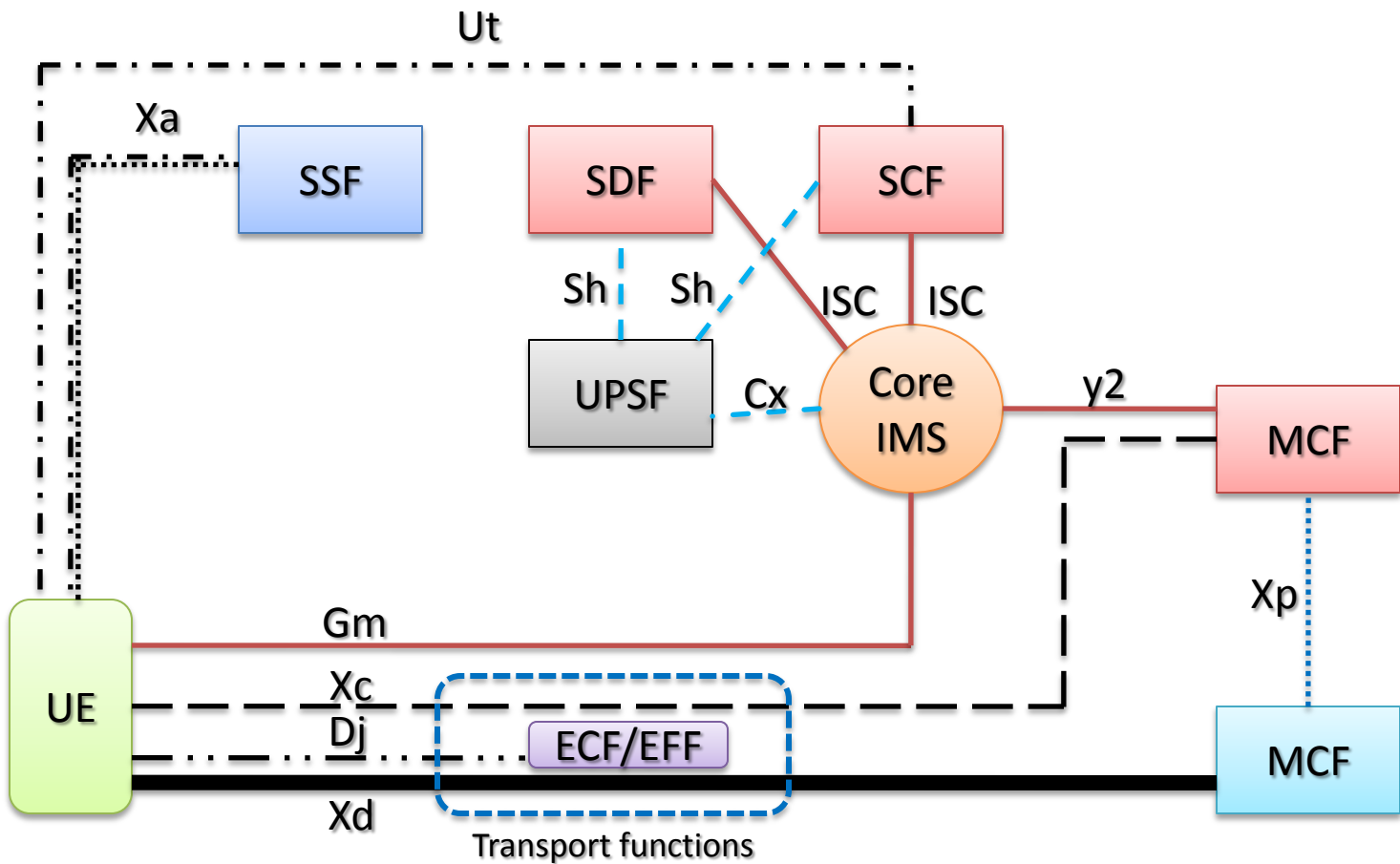
TS 23.517 Release 8: NGN IMS



TS 83.063 Release 2: IMS-based IPTV



- SIP/SDP (*Gm, ISC, y2*)
- ⋯ HTTP (*Xa, Ut*)
- RTP/RTCP (*Di, Dj, Ds, Iz*)
- - - RTSP (*Di, Dj, Ds, Iz*)
- - - Diameter
- ⋯ DVBSTP or FLUTE
- · - · - IGMP/MLD (*Di, Dj*)
- ⋯ Not defined



- SDF: Service Discovery Function
- SCF: Service Control Function
- SSF: Service Selection Function
- MCF: Media Control Function
- MDF: Media Delivery Function

SDF: Service Discovery Function

- Generates and/or provides the service attachment information
- Provides personalized service discovery

SSF: Service Selection Function

- Provides the service selection information, e.g. a list of available services that the UE can then browse and select
- Optionally provides service selection presentation information

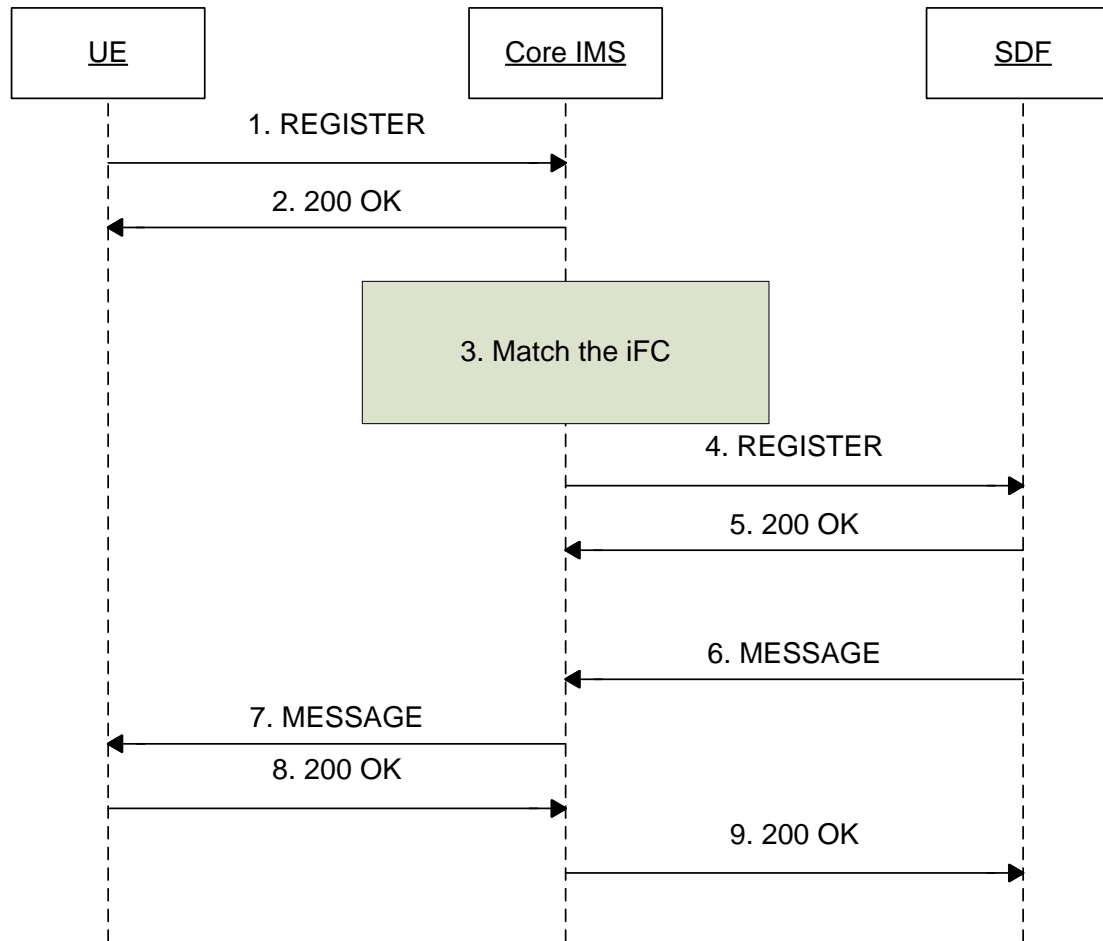
SCF: Service Control Function

- Service authorization during session initiation and session modification, which includes checking IPTV users' profiles in order to allow or deny access to the service
- Credit limit and credit control
- Select the relevant IPTV media functions

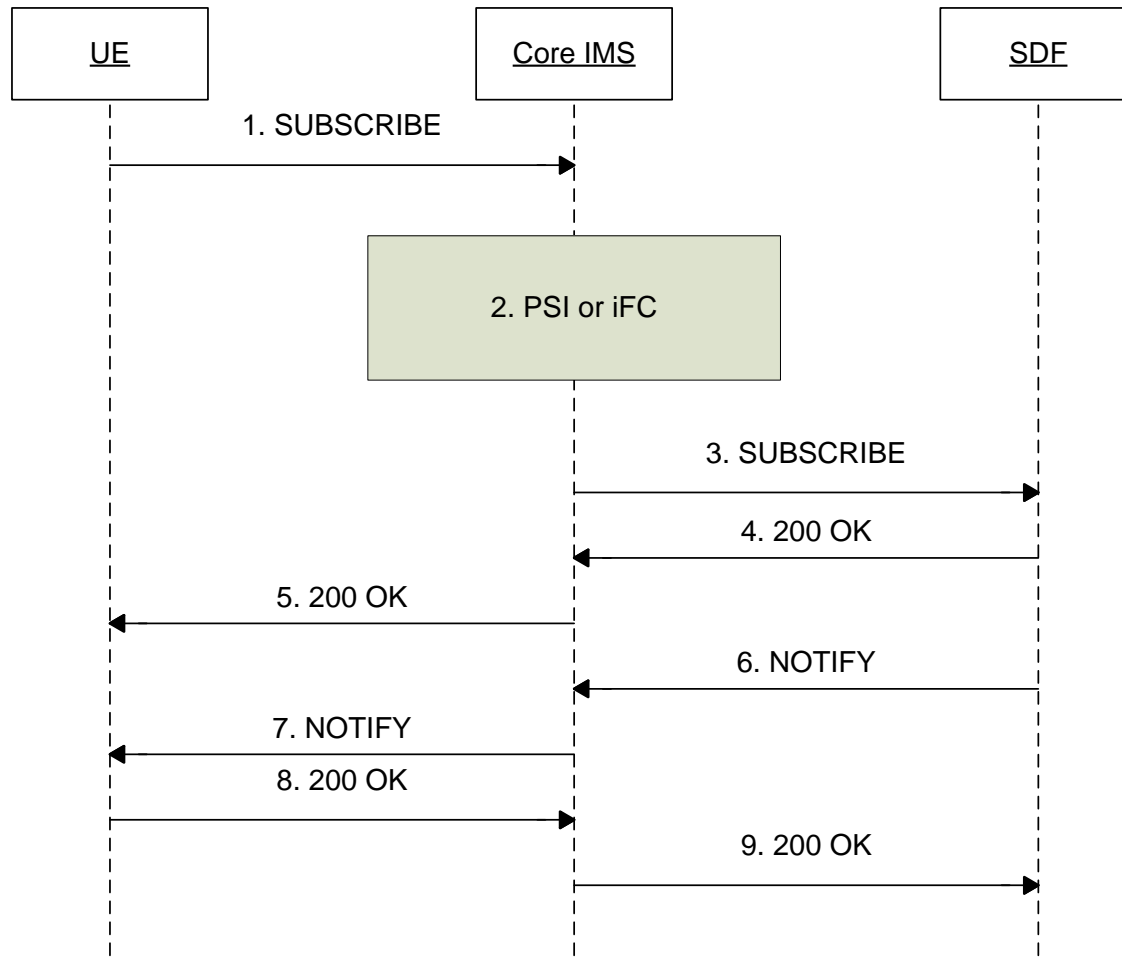
Procedures @ UE

1. IMS Registration
2. Service attachment
3. BC service
 1. Session initiation
 2. Session modification
 3. Session information
 4. Session termination
 5. Trick-play mode
4. CoD service
 1. Retrieving miss
 2. Session initiation
 3. Session modification
 4. Session termination
5. Service configuration
6. IPTV presence service
7. NPVR service
 1. NPVR capture request
 2. NPVR session

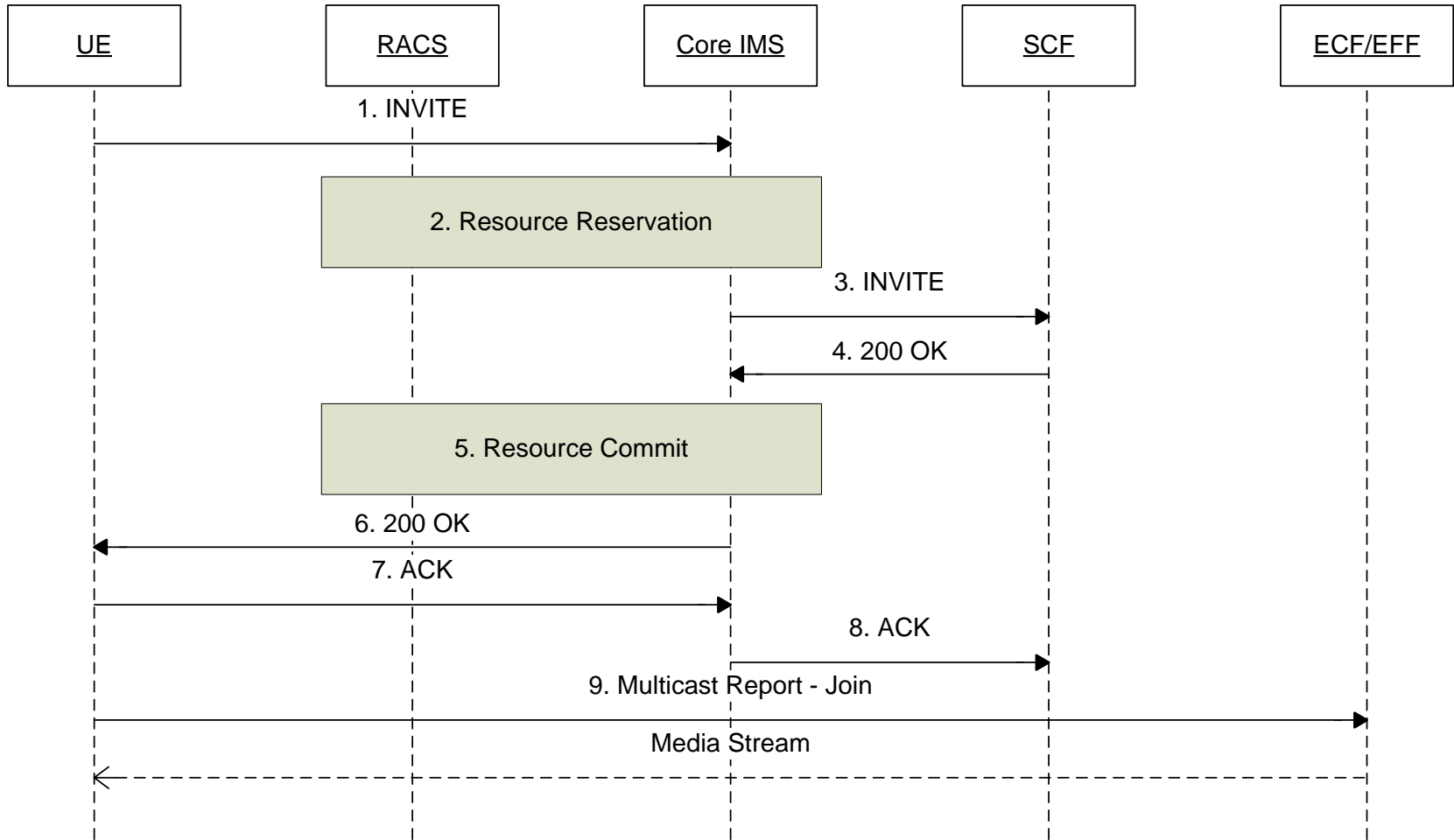
2. UE service attachment: push mode



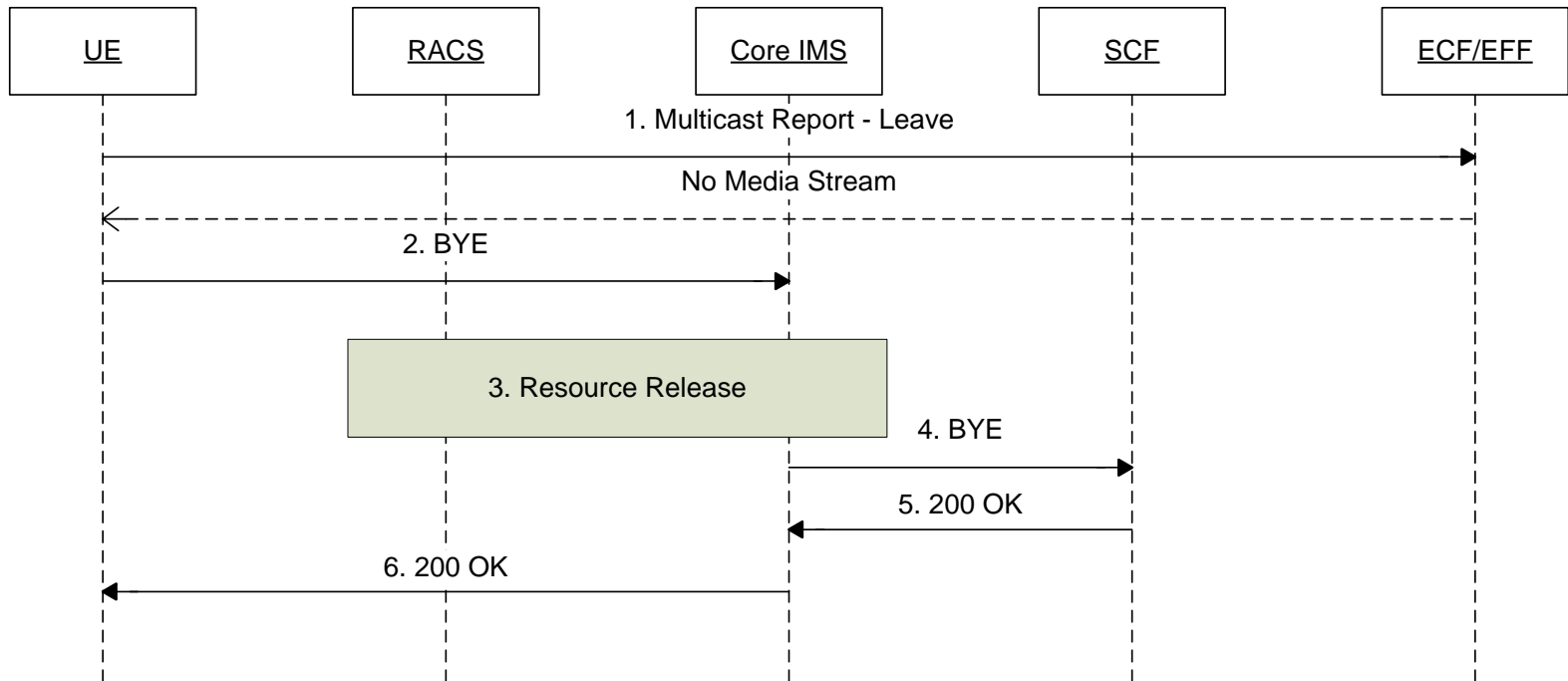
2. UE service attachment: pull mode



3.1. BC: Session init



3.2. BC: Session termination



3.3. BC: Channel switching

